



**ELITE  
ENGINEERING &  
CONSTRUCTION**

Rising above all



Looking down upon  
every minute detail  
to rise above all



## VISION

To rise up to the top of the rung in the Civil Engineering and Construction industry and make the society look up to Elite as an entity that stands out for its magnitude, expertise, integrity and magnanimity.

## MISSION

Elite aspires to attain corporate glory in its chosen domain by-

- Placing a premium on people and constantly honing their skills and inspiring them to achieve glory.
- Developing such Systems and process by which quality and timelines become automatic byproducts.
- Fostering a culture of peace and harmony amongst all stakeholders and the society around it



# a small step towards a gaint leap!

Any journey begins with a small step

We at Elite Engineering and Construction (EEC) are driven single-mindedly in our pursuit to establish ourself as one of the best in the construction industry.

It started in 2007 when Elite came on to the Civil Engineering & construction scene as Elite Engineering & Construction (Hyd) Private Limited, with its corporate office at Hyderabad in (now) Telangana State. Elite later expanded its operations to Karnataka, Tamil Nadu and Kerala and has a regional office at Chennai.

Elite of course rode on the robust shoulders of its promoters who had by then a decade of experience in the industry, having worked with the leading engineering & construction companies in India. An experience and competence that would set Elite on its course to reach right to the top!

# competence

Within construction industry Elite has made its mark in certain specialized segments viz.

Residential Buildings, Industrial structures, Institutional Buildings, Commercial Complexes including Infrastructure projects like Roads, Bridges and Logistic facilities.

Along the way Elite has also expanded its expertise into other specialized works/projects including:

- Major Industrial Heavy duty floorings
- Railway Bridges
- Swimming Pools
- Cement Manufacturing Factories
- Power Plant Structures
- Toll Plaza Buildings
- Construction of Multiplex Complex
- Building Finishing works
- Plumbing & Sanitary works





# why EEC?

## Zero tolerance towards quality commitment

Elite keeps a constant check on the quality systems and processes at each stage to avoid bad workmanship. Elite has good expertise in vendor management, material handling, labour psychology with internal checks and balances to keep a tab on work schedule and specifications to deliver unmistakable quality. Elite understands that its commitment to quality is just not to the client but to the public at large, since all the constructions are by and large meant for public use.



## Timelines are rarely negotiable

With a reputation for successfully delivering projects of various sizes and complexities on time every time, Elite has carved a niche and earned the trust of its customers. The company achieves this through the know-how of its people, by continually evolving its work-flow processes/methods and by investing into improvement of its technical and managerial competence.

## Cutting costs, not corners for the clients

Elite excels in working within the budgetary constraints by optimizing its resources, both men and machinery. Having its own equipment and completing projects within timelines puts a tab on cost escalation, the benefit of which is passed on to the client. Backward integration is a constant endeavor at Elite which benefits the clients in terms of costs and timelines.

# quality

Quality is the basis on which Elite's operations are conducted. We recognize the importance of providing quality assured service to our customers. In the same spirit, we encourage all our suppliers, consultants and project partners to apply rigorous quality processes in their operations.

The construction quality process includes:

- Trade assessment and compliance certification
- Building control services involving inspection and compliance
- The appointment of a foreman to oversee the works and communicate the scope and detailed requirements of the project
- The construction programme that provides guidance for planning and preparation of the work.

Elite group's meticulous planning prior to the start of construction provides the foundation on which every subsequent step is based. Addressing critical details during preconstruction frequently results in fewer construction-phase changes, reduced construction time, and cost savings. It also ensures that the finished product meets a client's needs.

Elite's policy to work closely with the client and design team has produced great results. We develop and maintain accurate construction cost estimates as well as analyze scheduling, materials, building systems, and construction methods. We also get input from our in-house experts in such disciplines as mechanical and electrical systems, foundations, structural detailing, and purchasing.





# safety

The company strives to attain and maintain high standards of environment, occupational health and safety at all places, defined by the organization besides adhering to legal and other requirements.

The company is committed to managing its construction process and other operations to ensure minimum wastage. Also prevent various types of pollution and minimize occupational health and safety risks through continual process and technology improvements.





# social responsibility

Elite is aware that it is but just a small element trying to make its presence felt in the microcosm of Society surrounded by the macrocosm of the environment. And hence, all the actions of Elite are constantly reviewed to ensure that it make a positive impact on the society and no negative impact on the environment.

The Corporate Social Responsibility (CSR) policy and the Environment, Health and Safety (EHS) policy of Elite are designed and implemented to make a profound and positive impact on both the spheres.



# clientele

In its not-so-long journey, Elite has still managed to build impressive landmark projects which it could always look back with pride and has earned the trust and gratitude of customers with which it could always go further in its journey. Its clients list includes the MNCs to Indian PSUs to Institutions to Private undertakings while the list of projects are also as varied. Whatever the constitution of the client or the nature of the project, Elite's fundamentals to deliver customer satisfaction always remained prime.

- Ascendas IT Park (VITP Pvt. Ltd.), Hyderabad
- Cognizant Technology Solutions India Pvt. Ltd., Hyderabad
- EMAAR-MGF, Hyderabad
- Indian Institute of Technology, Madras, Chennai
- IL & FS Engineering Services, Hyderabad.
- Ramco Cements Ltd., Chennai
- Madhucon Projects Ltd., Hyderabad.
- Metro Cash & Carry India Pvt. Ltd, Bangalore
- Seth Ghasiram Gopi Kishan Badruka Educational Trust, Hyderabad
- Somana Entertainment Pvt. Ltd., Secundrabad
- Techtrans Construction (India) Pvt. Ltd., Hyderabad
- Vermont Projects Pvt. Ltd., Hyderabad
- Namishree Infrastructure and Projects Pvt. Ltd., Hyderabad
- Srinivasa Shipping and Property Development Limited (SSPDL), Hyderabad
- Navin Housing & Properties Pvt. Ltd., Chennai
- Slate - The School, Tirupati
- Godrej Properties Ltd.
- BITS Pilani Hyderabad Campus
- Akshayapatra Foundation Pvt. Ltd.
- Appaswamy Real Estates
- Nayavuga Real Ventures

# Management

Elite understands that it's people who make the difference. And it also believes that it should have people who could bring in the difference. It helps to know the vision, passion, expertise and experience who would take Elite places.



## S.V. Gurusamy, Chairman & Managing Director

Mr S.V Gurusamy's commitment to quality and passion for perfection has helped Elite build a strong foundation of trust with all stakeholders. His stints in various capacities with big giants in the construction industry have sharpened his business acumen which played a key role in Elite's growth story. His innovative and dedicated approach to every project undertaken by Elite has placed Elite in a preeminent position in the industry.



## Subhash Kumar Jain, Director

Mr Jain has good experience in marketing of building materials and equipment spanning 16 years. Associated with Elite since 2007, his commitment and dedication has helped in building a strong base of vendors with harmonious vendor relationship and procurement management.



## S.V. Arumugam, Director

Mr Arumugam's experience of more than 16 years in infrastructure and industrial buildings arena has added tremendous importance to Elite's brand value. Associated with Elite since June 2007, he is well known for taking overall responsibility of people management, vendor development and ownership from conceptualization to execution.



## S.V. Srinivasan, Director

Known for his strong techno-commercial acumen, Mr Srinivasan has an experience of more than 11 years in areas of commercial and business development. Associated with Elite since June 2007, his knowledge, experience and expertise in client management and operations hold immense importance in the growth of Elite Group.





### **S. Sunder**, Additional Director

Specialized in areas of contracts and project management, Mr Sunder brings an experience of 18 years in construction industry. He has been associated with Elite since January 2009 and currently handles project planning and quality assurance.



### **Venkateswara Prasad**, General Manager

A civil engineer over 25 years in Construction Field. Mr. Venkateswara Prasad has extensive experience in construction and has handled various types of projects (in different portfolios) like Software Parks, Commercial, Industrial, Institutional and Residential Buildings etc., including co-ordination of Electro-Mechanical work.



### **P. Murugesan**, General Manager

Construction manager with over 21-years of exemplary record in end-to-end implementation of various constructions, infrastructure, superfund and environmental projects. Experience includes managing a crew of over 300 workers deployed in residential projects. Backed up by impressive professional credentials including an array of on-time, within-budget, top-quality project delivery capabilities



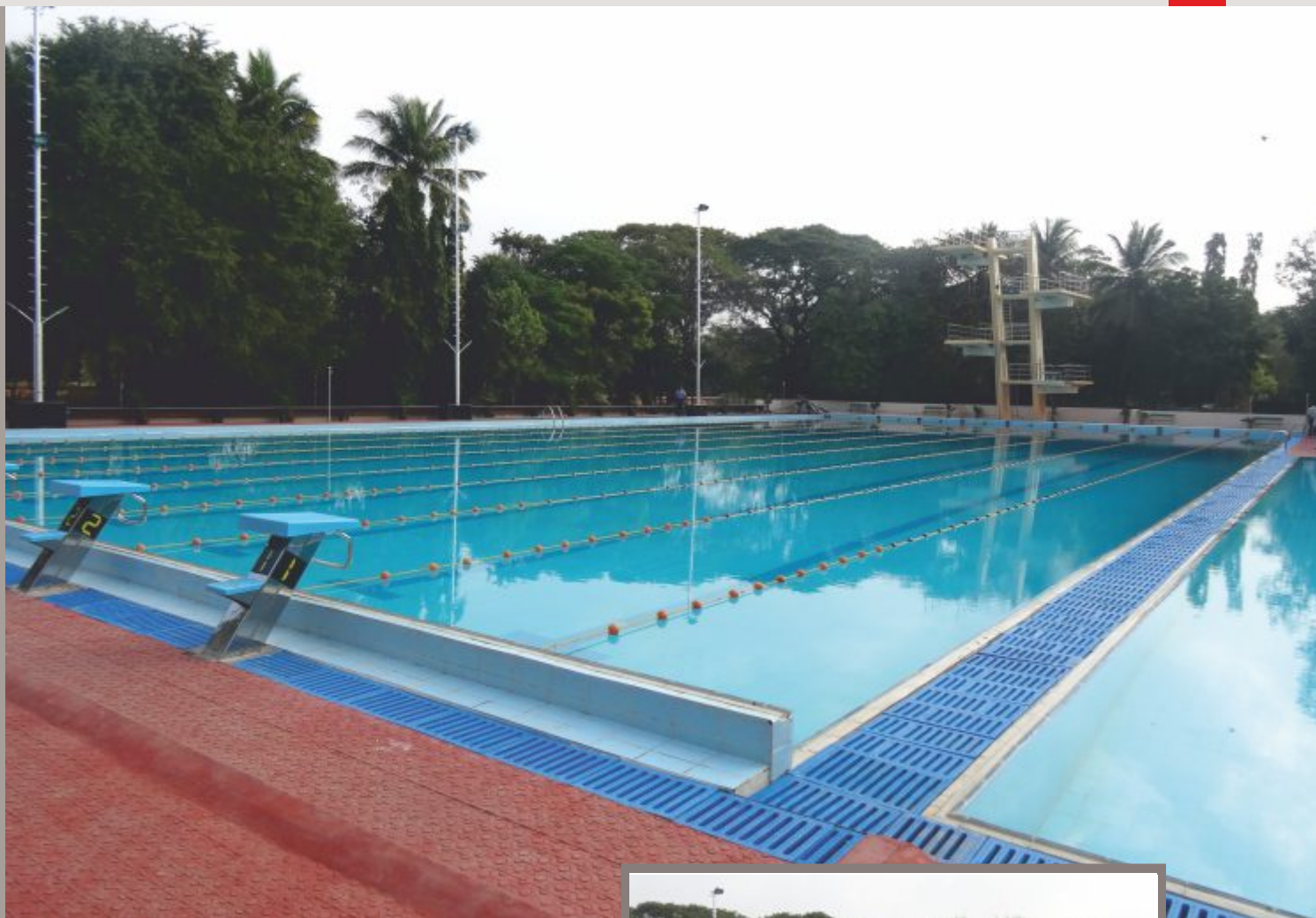


projects



Project  
Location  
Client  
Description

Mahindra Iris Phase-1 & 2  
Mahindra World City, Chengalpet  
Mahindra Integrated Township Pvt. Ltd.  
Residential apartments

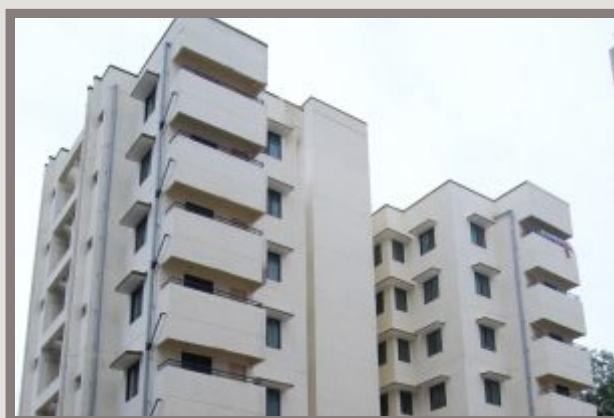


Project International Swimming Pool  
Location Chennai  
Client IIT Madras, Chennai  
Description Olympic standard pool





**Project** Nova Phase-1&2 at Mahindra World City  
**Location** Chengalpet, Tamil Nadu  
**Client** Mahindra Integrated Township Ltd.  
**Description** Residential Apartments



**Project** F Type Quarters  
**Location** RR Nagar Township  
**Client** Ramco Cements Ltd.  
**Description** 3 blocks of Stilt + 7 floors





**Project** Welkin Park  
**Location** Begumpet, Hyderabad  
**Client** Vermont Project Pvt. Ltd.  
**Description** Luxury residential apartments





Project Metro Cash & Carry  
Location Uppal, Hyderabad  
Client Metro Cash & Carry India Pvt. Ltd.  
Description Metro Cash & Carry distribution center





Project	F-Type accommodation
Location	IITM Campus, Chennai
Client	IIT Madras, Chennai
Description	60 nos. of F-Type, married research scholars accommodation





Project

Badruka School of Management

Location

Medchal, Hyderabad

Client

Seth Ghasiram Gopi Kishan Badruka  
Educational Trust, Hyderabad

Description

Construction of civil and structural works  
including facility, academic, boys & girls  
hostel, dining and other external  
works.





Project	Sangeet Cine leisure
Location	Secunderabad
Client	Somna Entertainment Pvt. Ltd.
Description	Mall cum multiplex



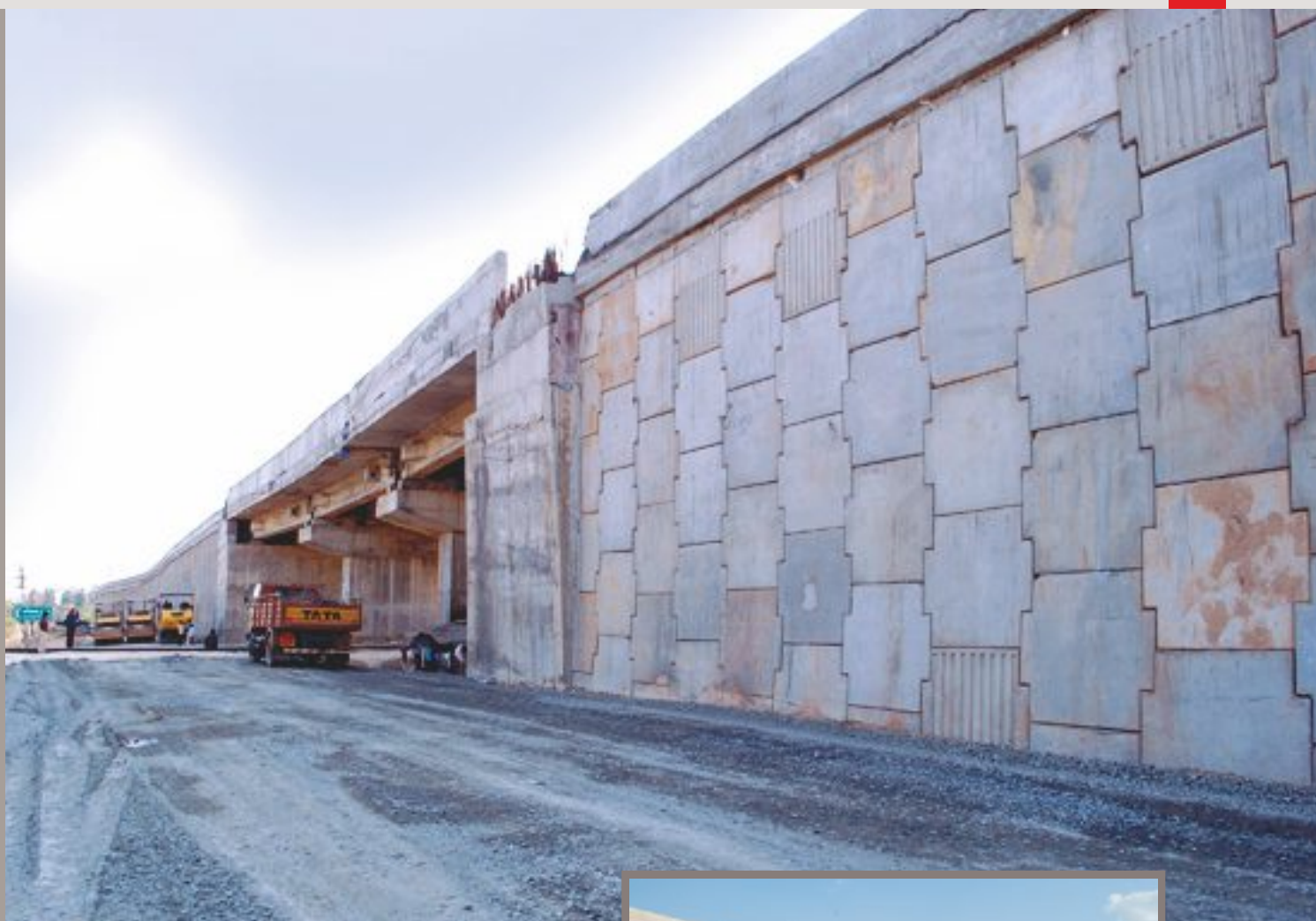
**Project** Major Bridge  
**Location** NHAI 45 B, Madurai to Tuticorin  
**Client** Maducon Projects Ltd.  
**Description** 21 nos. x 32 meter span major bridge





Project	Toll Plaza
Location	NHAI 45 B, Madurai to Tutucorin
Client	Maducon Projects Ltd.
Description	Toll plaza and control building





Project  
Location  
Client  
Description

Railway over bridge  
NHAI 67, Tanjore to Trichy  
Maducon Projects Ltd.  
3 span railway over bridge



**Project** Flyover bridge  
**Location** NHAI 45 B, Madurai to Tutucorin  
**Client** Ramco Cements Ltd.  
**Description** Flyover bridge and approach ramps on either ends of NH crossing on MPG miners road at Pandalgudi for RR Nagar plant, Tamil Nadu





**Project** Limestone Benefication Plant  
**Location** Alathiyur, Tamil Nadu  
**Client** Ramco Cements Ltd.  
**Description** Limestone washing and processing plant





Project	6MW Power Plant
Location	Alathiyur, Tamil Nadu
Client	Ramco Cements Ltd.
Description	6MW captive power plant



Project Nano Technology Center  
Location IITM, Chennai  
Client IIT Madras, Chennai  
Description Materials science research center







Project

Slate - The School Campus

Location

Tirupati, Andhra Pradesh

Client

Slate -The School

Description

Construction of school campus building



**Project** Navayuga Multiplex  
**Location** Hyderabad, Telangana  
**Client** Navayuga Engineering Company Ltd.  
**Description** Construction of 9 Multiplex theaters and Mall





Project	Construction of faculty housing
Location	Hyderabad, Telangana
Client	BITS Pilani Campus
Description	Construction of faculty housing FH 01 & FH 02 blocks





**Project** Construction of faculty housing  
**Location** Hyderabad, Telangana  
**Client** BITS Pilani Campus  
**Description** Construction of faculty housing  
FH 03 to 06 blocks, SH 08 and  
Open Air Theatre





**Project** Azure - The Oceanic  
**Location** Chennai, Tamil Nadu  
**Client** Appaswamy Real Estates Ltd.  
**Description** Construction of Multistoried Residential Apartments (double basement, Ground and 17 Floors)



**Project** Splendour  
**Location** Chennai, Tamil Nadu  
**Client** Appaswamy Real Estates Ltd.  
**Description** Construction of 19 Floor  
Multistoried Residential  
Apartments





Project	Luxor Apartments
Location	Kondapur, Hyderabad
Client	Trishala Infra Project Pvt. Ltd.
Description	474 nos. (2BHK, 3BHK) of residential apartments



**Project** Akshayapatra Foundation-  
Kitchen Unit

**Location** Hyderabad, Telangana

**Client** Akshayapatra Foundation

**Description** Construction of Mega Kitchen





- Project** Mantra Multiplex & Mall
- Location** Upparpally, Hyderabad
- Client** Namisree Infrastructure & Projects Pvt. Ltd.
- Description** 3 basement car parking, 3 floor shopping & 6 screen commercial space



**Project** SSPDL Residential Development Project

**Location** Hyderabad, Telangana

**Client** SSPDL Ltd.

**Description** Construction of 191 Villas.





Project	Godrej Azure
Location	OMR, Padur, Tamil Nadu
Client	Godrej Properties
Description	High-rise Residential apartments



Project Mahindra IRIS 3B  
Location Mahindra World City, Chengalpet  
Client Mahindra Integrated Township Pvt. Ltd.  
Description Residential apartments





certifications





## Quality Policy

Elite Engineering and Construction (EEC) aspires to reach the pinnacle in its chosen domain of civil infrastructure, construction of large buildings and industrial structures.

To this end, EEC shall work diligently to improve its quality systems and work processes and shall be committed for continual improvement of quality processes.

EEC shall always uphold the trust and protect the interests of its clients with utmost sincerity and integrity. Sticking to project delivery schedules and budgets, by optimizing resources, shall be intrinsic to EEC's operations.

Delivering customer delight, while safeguarding all the stakeholders' interests, including employees and investors, shall remain paramount to EEC always.

**S V Gurusamy**  
Managing Director  
Elite Engineering & Construction (Hyd) Pvt. Ltd.  
02-02-2017





## Environment, Health & Safety Policy

Elite Engineering and Construction (EEC) rigorously implements best practices to protect the Environment in the usage of materials, machinery and energy while continually evaluating the effect of its activities on Health and Safety of all the associates.

EEC ensures that there is safe and comfortable working environment by procuring necessary equipment and implementing safety measures to prevent physical injuries, reduce health hazards and minimize damage to property.

EEC achieves efficient EHS policy implementation through seamless infrastructure integration, effective communication, periodical instruction and training to all stakeholders while complying with all applicable environmental, health and safety laws and regulations in force from time to time.

**S V Gurusamy**  
Managing Director  
Elite Engineering & Construction (Hyd) Pvt. Ltd.  
02-02-2017









South Asia

# CERTIFICATE

**The Certification Body  
of TÜV SÜD South Asia Private Limited**

certifies that

**Elite Engineering & Construction (Hyd) Pvt. Ltd.**

Head Office: #2 - 40/3A, Kamala Arcade, Kothaguda - Kondapur,  
Hyderabad - 500 084, INDIA

**Regional Office:** 18, Defence Colony, Ekkattuthangal, Chennai - 600 032,  
Tamil Nadu, INDIA

has established  
and applies a Quality Management System for

**Construction of Residential Buildings,  
Industrial Buildings, Commercial Buildings**

An audit was performed, Report No. 20061551

Proof has been furnished that the requirements according to

ISO 9001 : 2008

are fulfilled. The certificate is **Valid until 2017-08-17**

Subject to successful completion of the Annual Audit before 2015-05-20

The present status of this Certificate can be obtained on [www.tuy-sud.in](http://www.tuy-sud.in)

Further clarifications regarding the scope of this certificate and the applicability of ISO 9001:2008 requirements may be obtained by consulting the certification body.

Certificate Registration No. 99 100 15492

Mumbai,

Effective Date: 2014-08-18

best of

Certification Body  
of TÜV SÜD South Asia Private Limited  
Member of TÜV SÜD Group







Rising above all



**ELITE ENGINEERING & CONSTRUCTION (HYD) PVT. LTD.**

**Corporate Office:**  
Plot #19, Veda's Prime House  
Jayabheri Enclave, Gachibowli  
Hyderabad-500032.  
Telangana.  
Tel:040-4020 8801

**Branch Office:**  
#18, Defence Colony  
Opp. Military Hospital  
Ekattuthankal  
Chennai-600 032. Tamil Nadu.  
Tel: 044-22331186/89

[info@elitegroup.in](mailto:info@elitegroup.in)  
[www.elitegroup.in](http://www.elitegroup.in)